



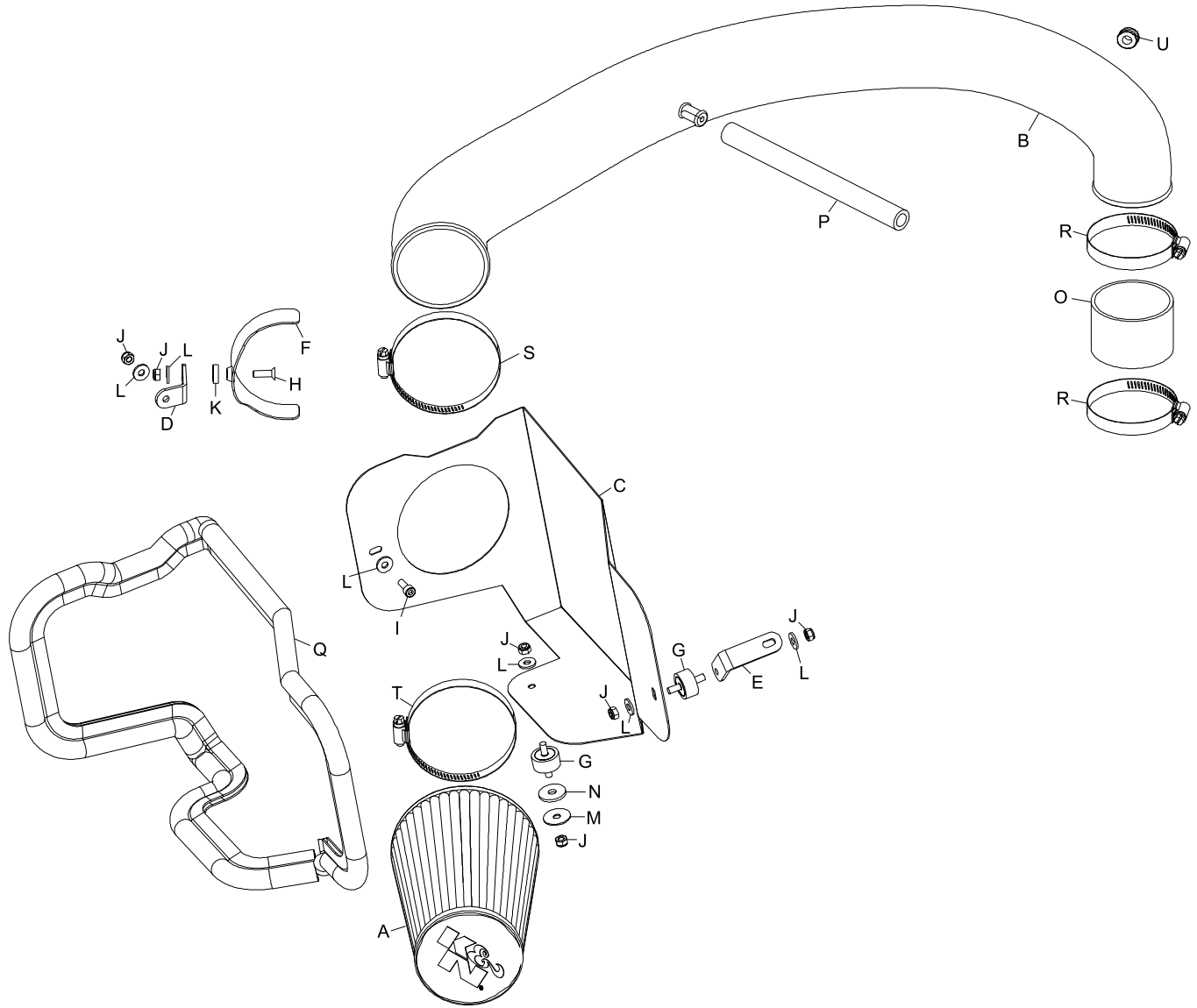
INTAKE SYSTEMS FOR VEHICLES LISTED ARE 50 STATE LEGAL. SEE KNFILTERS.COM FOR CARB STATUS ON EACH PART FOR A SPECIFIC VEHICLE.

INSTALLATION INSTRUCTIONS

57-1514-1
JEEP
1997-06 Wrangler
L6-4.0L

TOOLS NEEDED:

- Flat Blade Screwdriver
- Dykes
- Ratchet
- 7/16" Deep Socket
- 10mm Socket
- 10mm Wrench
- 4mm Allen Wrench
- 5mm Allen Wrench
- Drill
- 3/4 Drill Bit



PARTS LIST:

| Description | Qty. | Part # | Description | Qty. | Part # | Description | Qty. | Part # |
|----------------------|------|---------|-----------------------------------|------|--------|-------------------------------|------|---------|
| A AIR FILTER | 1 | RU-1045 | H BOLT; M6-1.00 X 20MM | 1 | 08376 | O HOSE; 2.75"ID X 2"L | 1 | 08756 |
| B INTAKE TUBE | 1 | 08767A | I BOLT; M6-1.00 X 16MM ALLEN | 1 | 07818 | P HOSE; 1/2"ID X 9"L | 1 | 08401 |
| C HEAT SHIELD | 1 | 07424A | J 6MM NYLOCK NUT | 6 | 07553 | Q EDGE TRIM 55"L | 1 | 102480A |
| D ANGLED "L" BRACKET | 1 | 070942 | K WASHER; CONICAL | 1 | 08180 | R HOSE CLAMP #44 | 2 | 08577 |
| E "L" BRACKET | 1 | 070932A | L WASHER; 1/4"ID X 5/8"OD | 6 | 08275 | S HOSE CLAMP #56 | 1 | 08620 |
| F BRACKET; SADDLE | 1 | 078855 | M WASHER; 1"ID X 1/4" HOLE FENDER | 1 | 08160 | T HOSE CLAMP #60 | 1 | 08624 |
| G RUBBER MNTD. STUD | 2 | 07027 | N WASHER; 1" X .300 X .063 RUBBER | 1 | 21685 | U GROMMET; 1"OD, 1/2"ID, 1/2" | 1 | 08064 |

If you need any assistance please call 1-800-858-3333 to speak with a representative in our Customer Service Center before returning the product.

NOTE: FAILURE TO FOLLOW INSTALLATION INSTRUCTIONS AND NOT USING THE PROVIDED HARDWARE MAY DAMAGE THE INTAKE TUBE, THROTTLE BODY AND ENGINE.

TO START:

1. Turn off the ignition and disconnect the negative battery cable.

NOTE: Disconnecting the negative battery cable erases pre-programmed electronic memories. Write down all memory settings before disconnecting the negative battery cable. Some radios will require an anti-theft code to be entered after the battery is reconnected. The anti-theft code is typically supplied with your owner's manual. In the event your vehicles' anti-theft code cannot be recovered, contact an authorized dealership to obtain your vehicles anti-theft code.



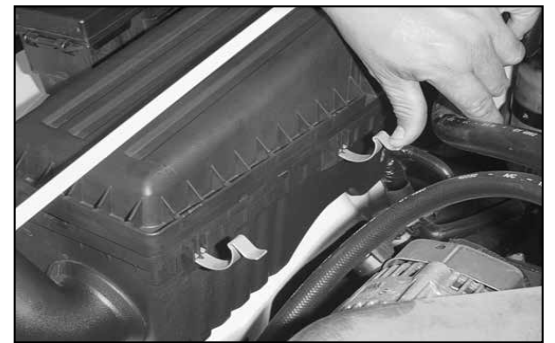
2. Detach the crank case vent hose from the stock intake tube.



3. Loosen the hose clamp on the intake tube at the throttle body.



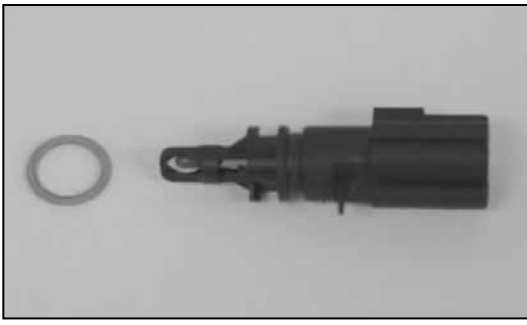
3a. On vehicles equipped with a temperature sensor, depress the temperature sensor electrical connection locking tab and then pull on the connector to disconnect the connection.



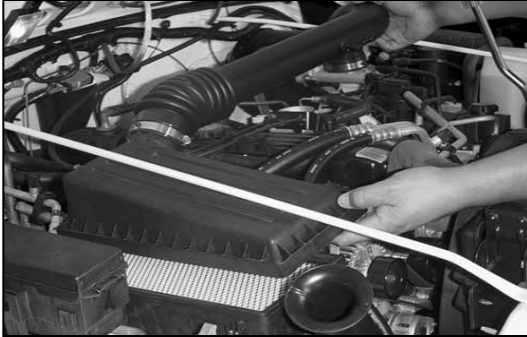
4. Release the 5 over center clips that retain the air box top to the air box base.



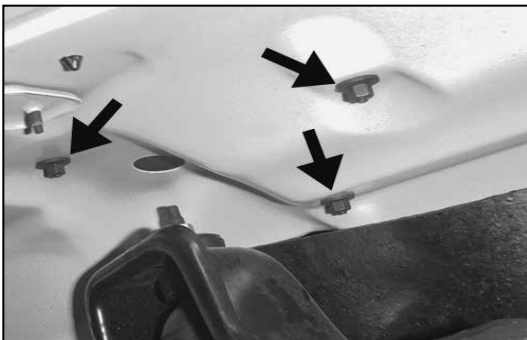
5. On vehicles equipped with a temperature sensor, lift the temperature sensor-locking tab while twisting the sensor counter clockwise to remove the sensor from the intake tube. **NOTE: The temperature sensor is fragile, handle with care.**



5a. Remove the sealing o-ring from the temperature sensor as shown.



6. Detach the intake tube from the throttle body and remove the entire upper air intake assembly.



7. Loosen and remove the 3 nuts that retain the air box base to the inner fender apron.

NOTE: These are accessed from the underside of the fender.



8. Remove the air box base.

NOTE: K&N Engineering, Inc., recommends that customers do not discard factory air intake.



9. Install trim seal onto the heat shield.

NOTE: Some cutting and trimming will be necessary to achieve the best fit.

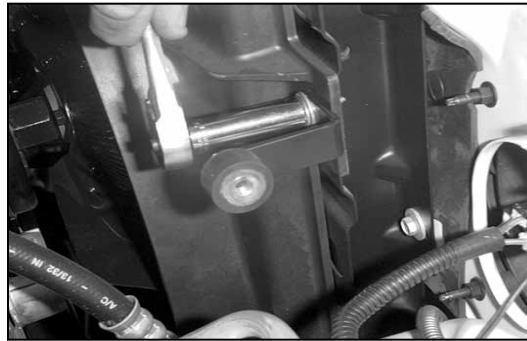


10. Attach a rubber mount stud to the "L" bracket using the provided hardware.

NOTE: Do not tighten completely at this time.



11. Loosen and remove the upper radiator shroud's retaining bolt.



12. Install the "L" bracket using the bolt removed in the previous step.



13. Install the second rubber mount stud into the lower air box mounting point using the provided hardware.



14. Assemble the saddle and "L" bracket using the provided hardware.



15. Attach the saddle bracket assembly to the heat shield using the provided hardware.

NOTE: Do not tighten completely at this time.



16. Install the heat shield assembly.



17. Secure the heat shield to the rubber mount studs using the provided hardware.



18. Attach the silicone hose to the throttle body using the provided hose clamp.



19. Install the K&N® intake tube.



19a. Position the temperature sensor electrical connector next to the K&N® intake tube for the best fit, then mark the location to be drilled.



19b. Remove the K&N® intake tube from the vehicle and drill a 3/4" hole at the position marked in step #19a. Install the provided grommet into the hole that was drilled out.

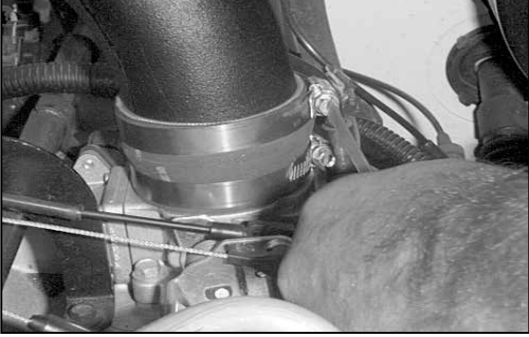


19c. Install the temperature sensor into the grommet as shown.

NOTE: The temperature sensor is fragile, handle with care.



20. Secure the intake tube to the saddle bracket using the provided hose clamp.



21. Tighten the hose clamp on the silicone hose at the intake tube.



22. Detach the crank case vent hose from the vent fitting on the valve cover.



23. Attach the provided vent hose onto the vent fitting of the valve cover and the K&N intake tube.



23a. Reconnect the temperature sensor electrical connection to the temperature sensor.



24. Install the K&N air filter element onto the intake tube and tighten with the provided hose clamp.

25. Reconnect the vehicle's negative battery cable. Double check to make sure everything is tight and properly positioned before starting the vehicle.

26. The C.A.R.B. exemption sticker, (attached), must be visible under the hood so that an emissions inspector can see it when the vehicle is required to be tested for emissions. California requires testing every two years, other states may vary.

27. It will be necessary for all K&N high flow intake systems to be checked periodically for realignment, clearance and tightening of all connections. Failure to follow the above instructions or proper maintenance may void warranty.

ROAD TESTING:

1. Start the engine with the transmission in neutral or park, and the parking brake engaged. Listen for air leaks or odd noises. For air leaks secure hoses and connections. For odd noises, find cause and repair before proceeding. This kit will function identically to the factory system except for being louder and much more responsive.

2. Test drive the vehicle. Listen for odd noises or rattles and fix as necessary.

3. If road test is fine, you can now enjoy the added power and performance from your kit.

4. K&N Engineering, Inc., requires cleaning the intake system's air filter element every 100,000 miles. When used in dusty or off-road environments, our filters will require cleaning more often. We recommend that you visually inspect your filter once every 25,000 miles to determine if the screen is still visible. When the screen is no longer visible some place on the filter element, it is time to clean it. To clean and re-oil, purchase our filter Recharger service kit, part number 99-5050 or 99-5000 and follow the easy instructions.

INTAKE SYSTEMS FOR VEHICLES LISTED ARE 50 STATE LEGAL. SEE KNFILTERS.COM FOR CARB STATUS ON EACH PART FOR A SPECIFIC VEHICLE.